

## ***Lansdowne Crescent School Home-Area***

### **General Information**

At present, schools are using school Home-Area Maps that were created in 2005.

Following the decision by Cabinet in April 2012 to accept the recommendations of the School Viability Reference Group, work has commenced on progressing Recommendations 1-3 from that report.

Recommendations 1 and 2 seek the department to review the Enrolment and Attendance Guidelines, and current policies and guidelines relating to school boundaries and catchment areas. Stakeholders indicated that the current documentation was out-dated and interpreted in different ways by schools, parents and the public.

The primary aim of the analysis of Home-Area Maps was to increase the percentage of students attending their local school. The following principles were used to guide this work:

- Students will attend the school in their local Home-Area
- Each primary school will have a defined Home-Area.
- Each primary school will be linked to a local high school.

Application of the following criteria will determine home-areas:

- current school building infrastructure and current utilisation
- student current home address and current student enrolment data
- recent school closures and amalgamation decisions
- road and transport infrastructure
- distance of home address to local school
- natural geographic boundaries

The following process has been used to develop the proposed maps for schools:

- 2011 first term census information was geocoded, mapped, researched and analysed; then a proposed map was created based upon the criteria outlined above;
- This process was repeated with the 2012 first term census information and comparisons made between the two data sets
- This data and proposed maps were presented to the Home-Areas Reference Group in July 2012 and were further map refinement was undertaken after this meeting.

The department also reviewed the way the map information was presented and has produced cleaner, simpler maps. The department has also produced Google maps of the home-areas which will allow school communities to view the details of the maps using Google Earth.

### **School Specific Information**

From investigating the Present Home Area Map it was noted that there were more homes around Brisbane Street attending Goulburn Street Primary School than Lansdowne Crescent Primary School. So it is suggested that the Goulburn Street/Lansdowne Crescent boundary move from the Melville Street to Brisbane Street.

In addition the 2012 data shows that the majority of homes around Mellifont Street are attending Lansdowne Crescent Primary and not Mount Stuart Primary and an adjustment of this boundary from Arthur Street to Rossendell Avenue should be further considered by school communities.

### **2011 Present Area Summary Data**

Nominated School	Lansdowne Crescent Primary
Staying In Area	254
Total Students	299
Percentage In Area	84.9%

NB: Total does not count students attending Special Schools

### **2012 Present Area Summary Data**

Nominated School	Lansdowne Crescent Primary
Staying In Area	262
Total Students	311
Percentage In Area	84.2%

NB: Total does not count students attending Special Schools

**2013 First Term Census Enrolment Data:** 399 students

**Estimated Student Capacity:** 375 students

This data is compiled from enrolment information provided by schools to the department and the first term census data. It shows where students who live in the current Home-Area attend school.

### **2011 Schools of Primary Students Living In Present Lansdowne Crescent School Home-Area**

<b>Campus_Name</b>	<b>KK</b>	<b>PP</b>	<b>01</b>	<b>02</b>	<b>03</b>	<b>04</b>	<b>05</b>	<b>06</b>	<b>Total</b>
Lansdowne Crescent Primary School	33	42	28	45	26	30	28	22	254
Goulburn Street Primary School	1	1	4	3	1	1	4	4	19
Campbell Street Primary School		2		2	2			2	8
Albuera Street Primary School		2			1	1	1	1	6
Mount Stuart Primary School	1			2			2		5
Taroona Primary School				1	1		1	1	4
Southern Support School		1							1
New Town Primary School	1								1
Sandy Bay Infant School		1							1
Cambridge Primary School		1							1
<b>Total</b>	<b>36</b>	<b>50</b>	<b>32</b>	<b>53</b>	<b>31</b>	<b>32</b>	<b>36</b>	<b>30</b>	<b>300</b>

Based on this enrolment information and using the criteria outlined on the first page, adjustments have been suggested to Home-Area Maps. This has resulted in the following changes to the data:

### **2011 Schools of Primary Students Living In Proposed Lansdowne Crescent School Home-Area**

<b>Campus_Name</b>	<b>KK</b>	<b>PP</b>	<b>01</b>	<b>02</b>	<b>03</b>	<b>04</b>	<b>05</b>	<b>06</b>	<b>Total</b>
Lansdowne Crescent Primary School	31	41	28	44	26	30	28	22	250
Goulburn Street Primary School	1	1	2	2	1	1	4	2	14
Albuera Street Primary School		2			1	1	1	1	6
Mount Stuart Primary School	1			2			2		5
Campbell Street Primary School		1		2	1			1	5
Taroona Primary School				1	1		1	1	4
Southern Support School		1							1
Sandy Bay Infant School		1							1
New Town Primary School	1								1
Cambridge Primary School		1							1
<b>Total</b>	<b>34</b>	<b>48</b>	<b>30</b>	<b>51</b>	<b>30</b>	<b>32</b>	<b>36</b>	<b>27</b>	<b>288</b>

This data is compiled from enrolment information provided by schools to the department and the first term census data. It shows where students who live in the current Home-Area attend school.

### 2012 Schools of Primary Students Living In Present Lansdowne Crescent School Home-Area

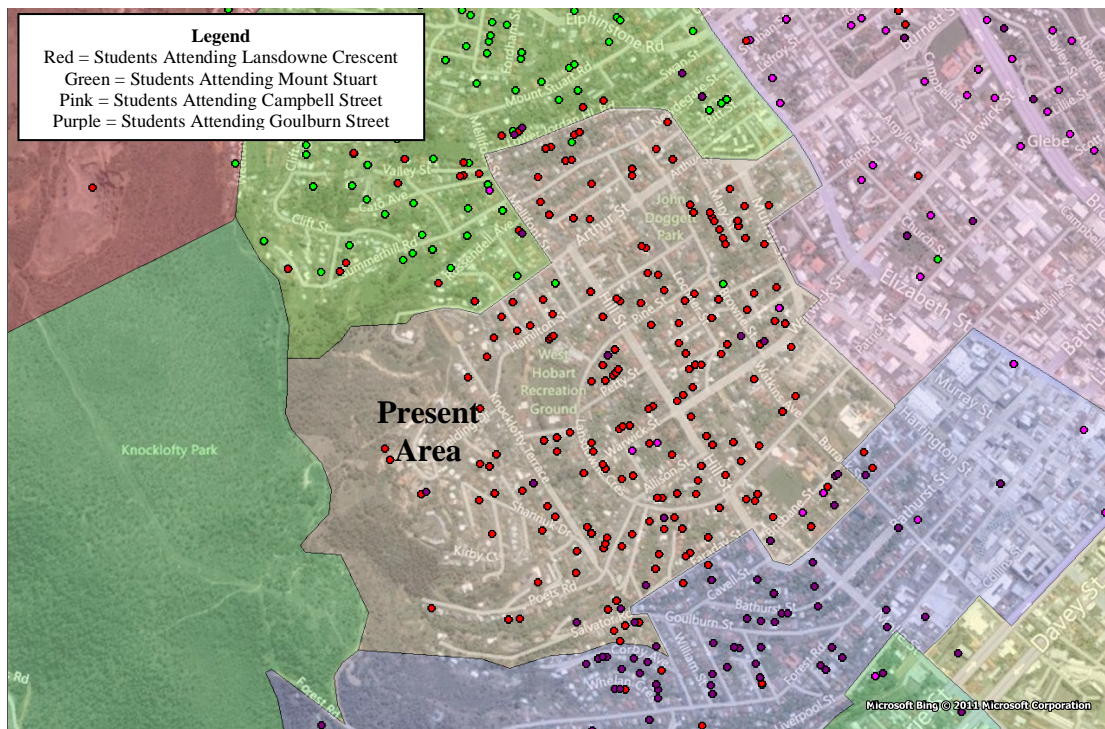
Campus_Name	KK	PP	01	02	03	04	05	06	Total
Lansdowne Crescent Primary School	42	29	44	24	39	25	30	29	262
Goulburn Street Primary School	3	1	2	4	5	2		4	21
Mount Stuart Primary School		2			1		1	2	6
Campbell Street Primary School			2		2	2			6
Albuera Street Primary School		1				1	2	1	5
Taroona Primary School	1				1	1		1	4
Sandy Bay Infant School	1		1						2
Lindisfarne North Primary School	1		1						2
Lenah Valley Primary School					1	1			2
Southern Support School			1						1
Illawarra Primary School		1							1
<b>Total</b>	<b>48</b>	<b>34</b>	<b>51</b>	<b>28</b>	<b>49</b>	<b>32</b>	<b>33</b>	<b>37</b>	<b>312</b>

Based on this enrolment information and using the criteria outlined on the first page, adjustments have been suggested to Home-Area Maps. This has resulted in the following changes to the data:

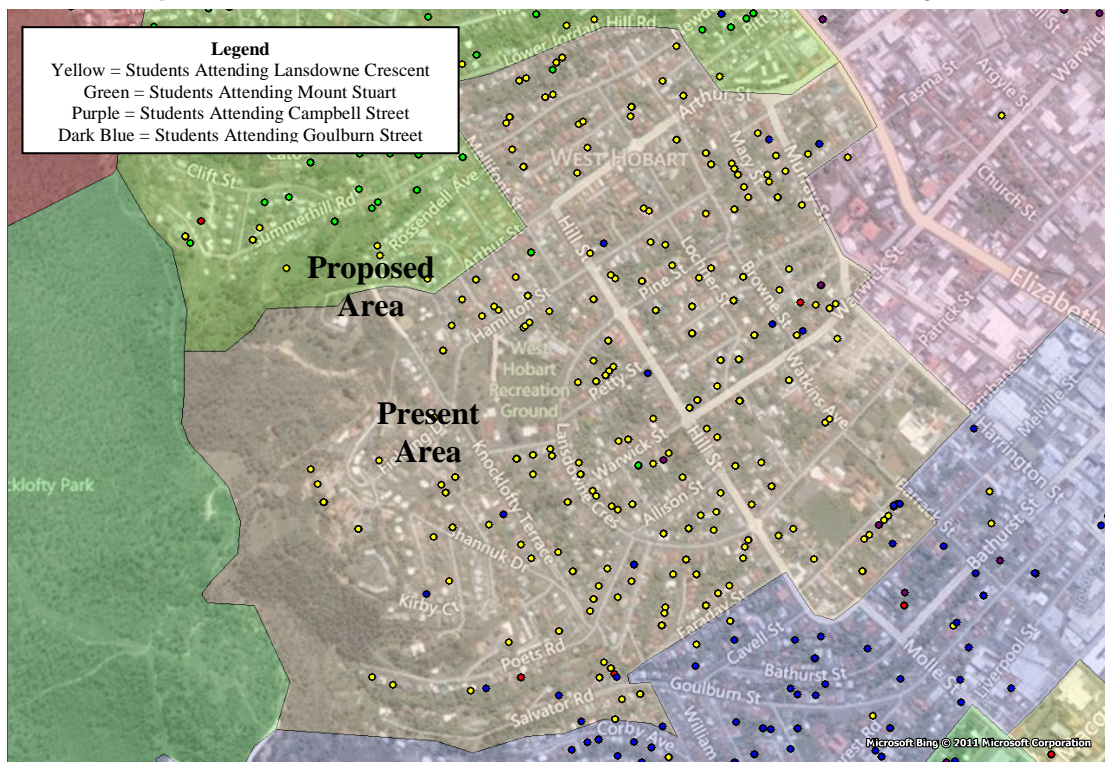
### 2012 Schools of Primary Students Living In Proposed Lansdowne Crescent School Home-Area

Campus_Name	KK	PP	01	02	03	04	05	06	Total
Lansdowne Crescent Primary School	40	26	43	24	38	25	30	29	255
Goulburn Street Primary School	3	1	2	2	3	1		4	16
Mount Stuart Primary School		2			1		1	2	6
Taroona Primary School	1				1	1		1	4
Campbell Street Primary School			1		2	1			4
Albuera Street Primary School		1				1	1	1	4
Sandy Bay Infant School	1		1						2
Lindisfarne North Primary School	1		1						2
Lenah Valley Primary School					1	1			2
Southern Support School			1						1
Illawarra Primary School		1							1
<b>Total</b>	<b>46</b>	<b>31</b>	<b>49</b>	<b>26</b>	<b>46</b>	<b>30</b>	<b>32</b>	<b>37</b>	<b>297</b>

## 2011 Map of Present Lansdowne Crescent Area Primary Students



## 2012 Map of Present Lansdowne Crescent Area Primary Students







Mount Stuart Primary School

Proposed 2015 Map

Campbell Street Primary School  
Early Childhood Intervention Service - Tasmania

Elizabeth College

Lansdowne Crescent Primary School

Goulburn Street Primary School

Google earth





Mount Stuart Primary School

Current Map

Campbell Street Primary School  
Early Childhood Intervention Service - Tasmania

Elizabeth College

Lansdowne Crescent Primary School

Goulburn Street Primary School

Google earth